

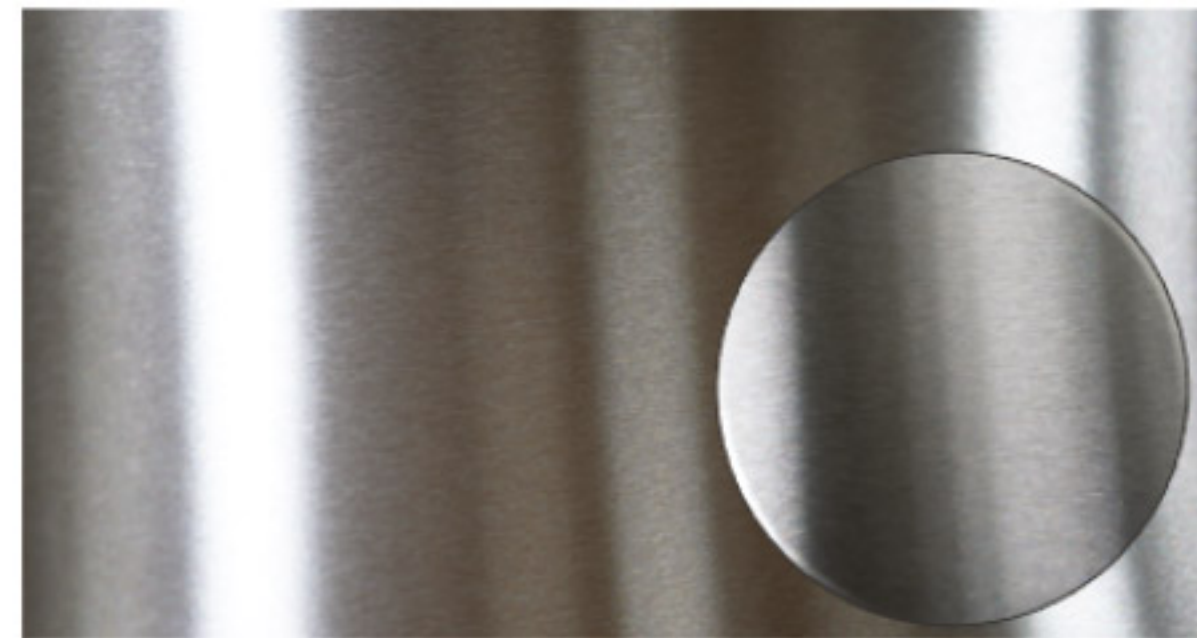
### Anti FingerPrint Coating



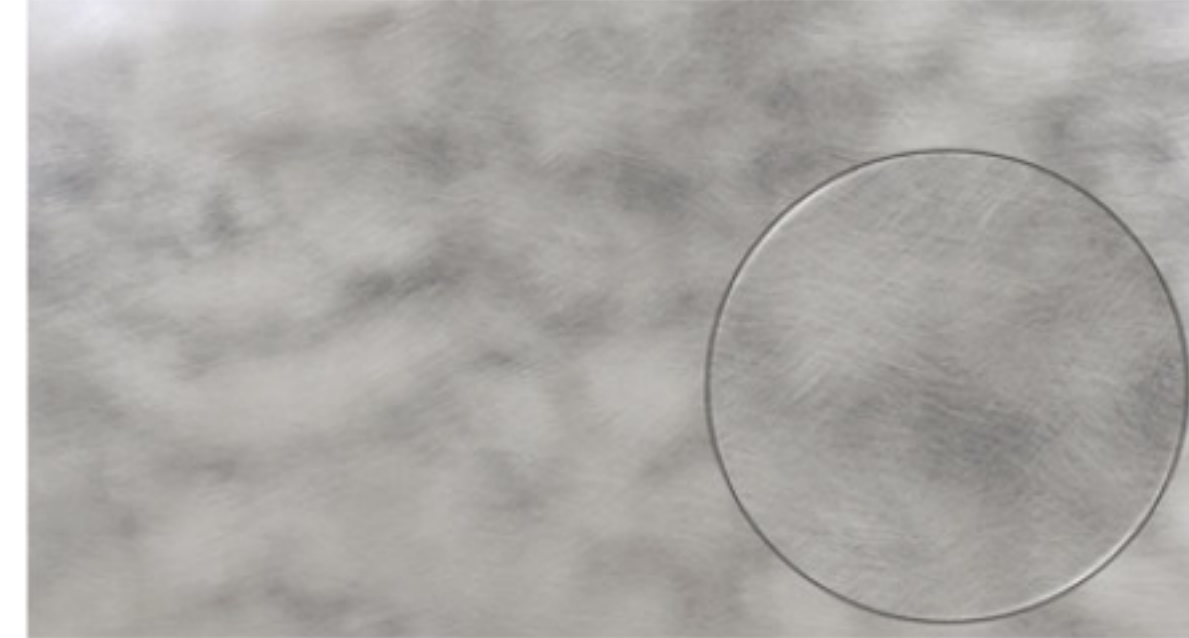
#4



Horizontal Hair Line

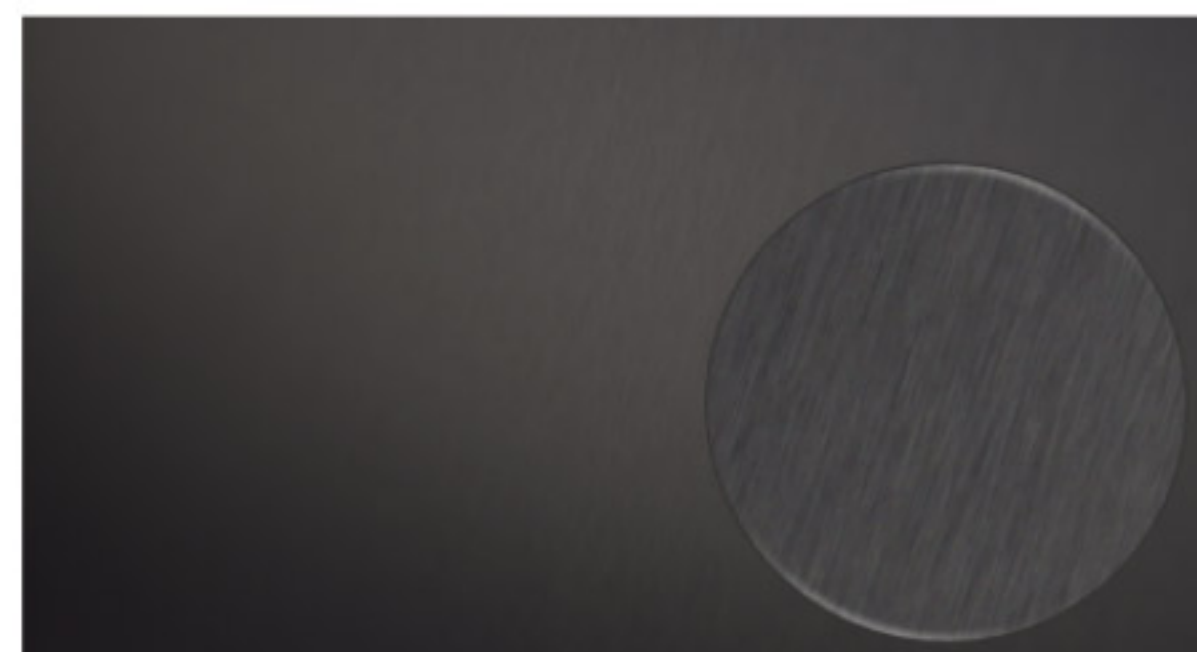


#3



Marble

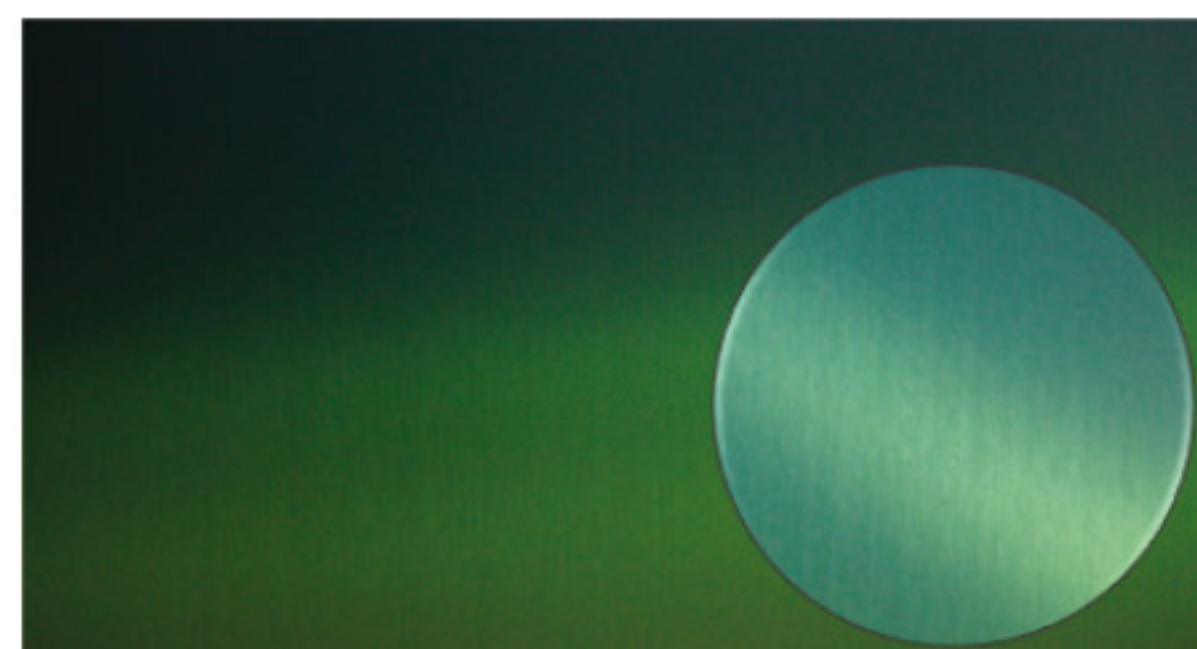
### Color Coating



Matt Black



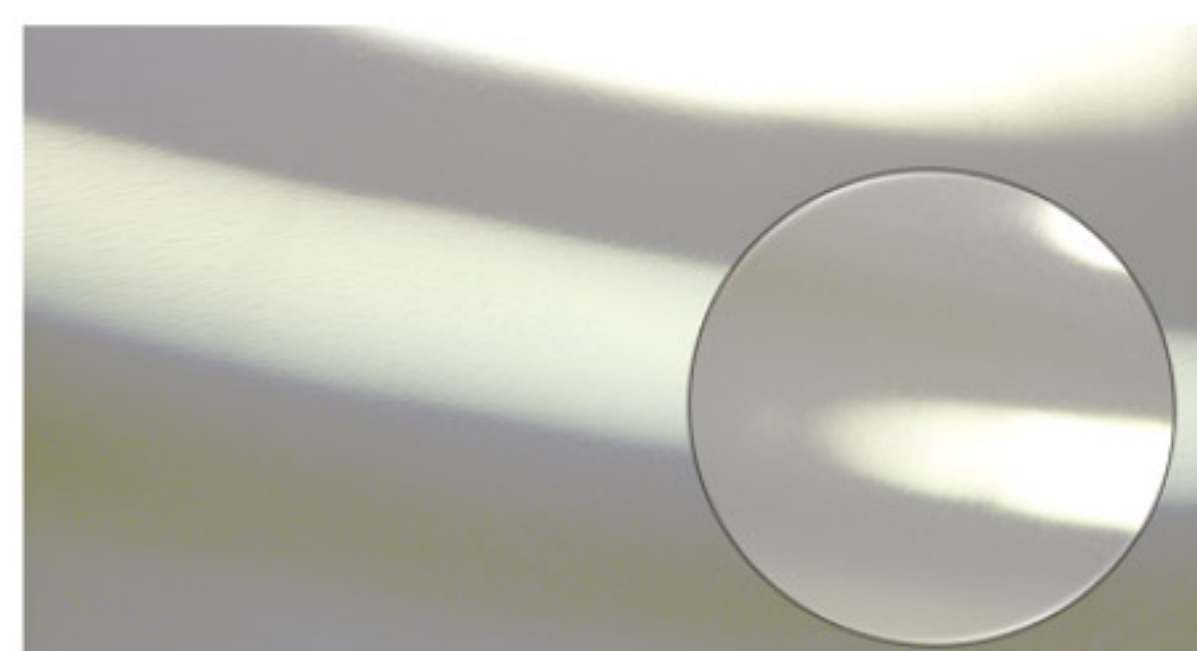
Black



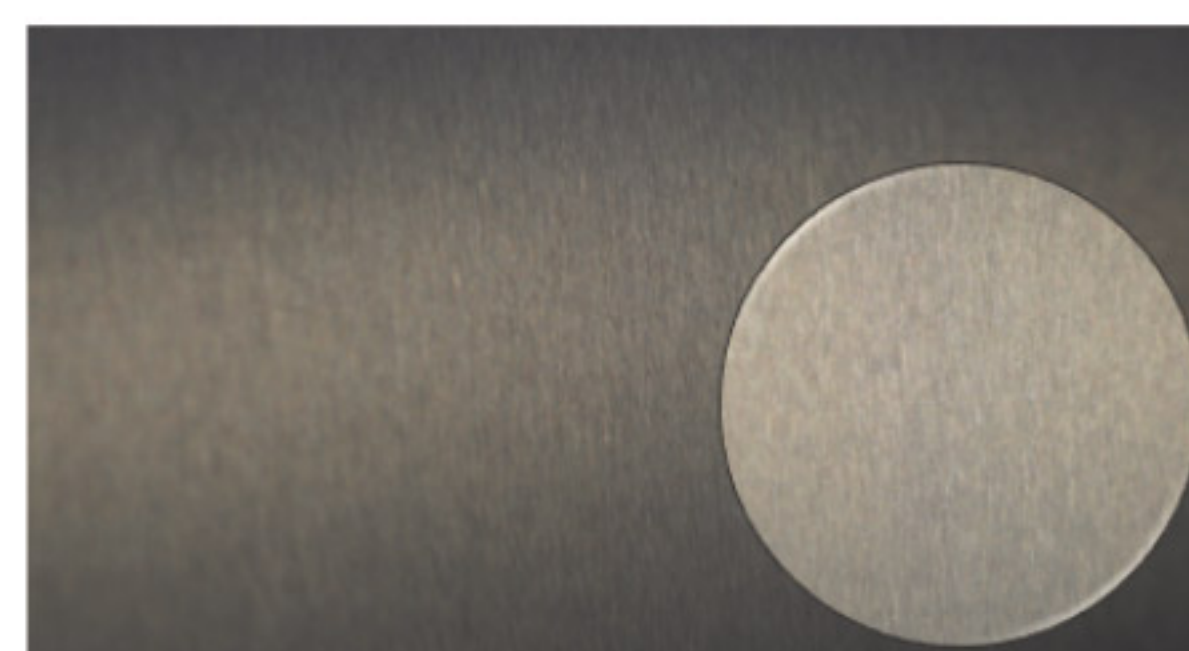
Matt Green



Bronze



Silver



Gray



#### DMS KOREA

HQ : 103-58, Golden root-ro,  
Juchon-myeon, Gimhae-si,  
Gyeongsangnam-do, Republic of Korea

Factory 2 : 99, jisandan-ro, Juchon-myeon,  
Gimhae-si, Gyeongsangnam-do,  
Republic of Korea

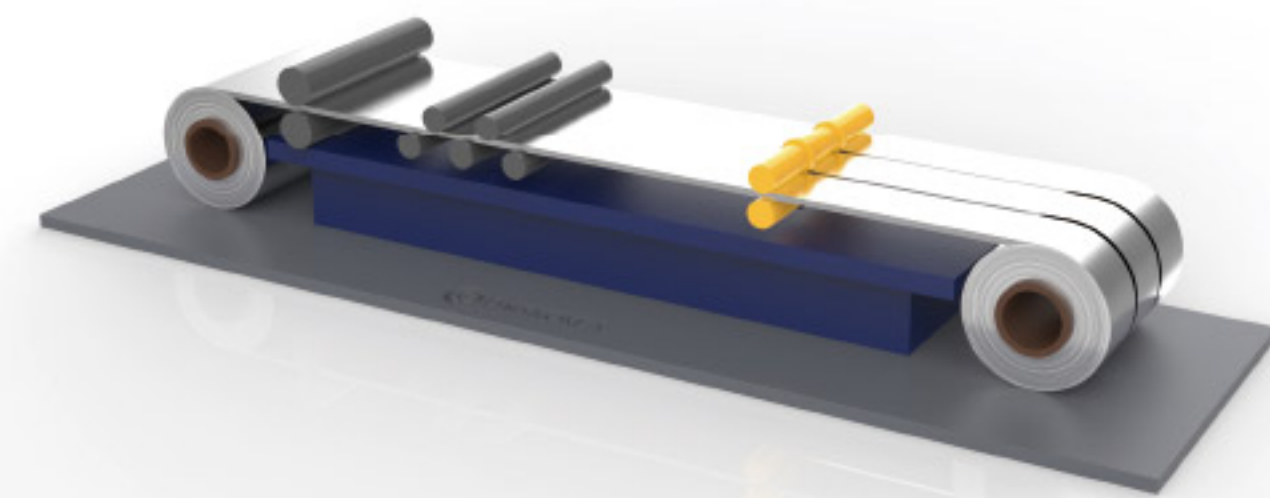
Tel +82)055-329-8419  
FAX +82)055-329-8420  
E-mail [hykim48@dmskor.com](mailto:hykim48@dmskor.com)  
Sales +82010-2987-5201





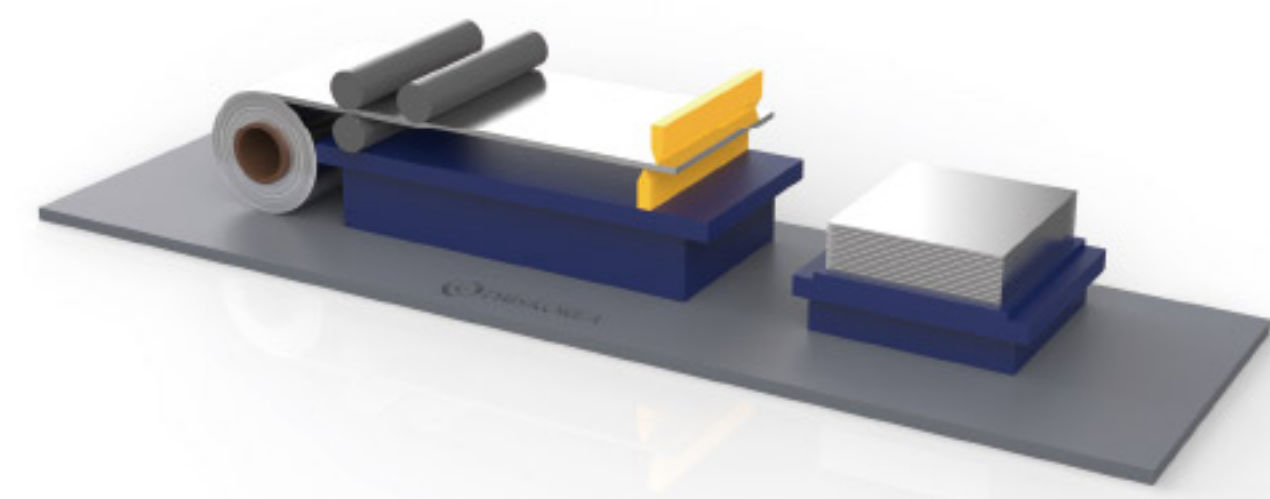
## 1. SLITTER LINE

An Equipment that cuts and arranges both ends of the strip coil, or cuts it into multiple strands lengthwise. The process of attaching a protective film and cutting it to the width of the order.



## 2. SHEAR LINE

An equipment that cuts sheet in the longitudinal direction.



## Facilities & Capacity

Facilities	Finish	Specification			Capa.(mt/Year)
		Thickness	Width	Length	
Coil to Coil Polishing Line	No.3, No.4, HL, Scotch Brite, Duplo	0.3~2.0	700~1600	-	25,200
Coil to Coil Multi Polishing Line	Horizontal No.4, Horizontal HL, Vibration, Marble Finish	0.3~1.5	600~1300	-	5,000
Slitter Line	All Finish	0.3~1.5	600~1300	-	36,000
Rotary Shear Line		0.3~2.0	600~1300	400~4500	30,000
Mini shear Line		0.3~1.5	300~800	500~2000	15,000
Ultra Mini shear Line		0.3~2.0	30~550	4000	6,000
Auto Shear Line		0.4~2.0	600~1250	600~2438	
Shearing Machine		0.4~2.0	50~2000	50~	

## Grades

Grade	Finish(Coil to Coil)	Range(mm)		Remark
		Thickness	Width	
201(1Ni, 15~6Cr) 204Cu(1.5Ni, 16Cr) 204Cu3(2Ni, 17Cr) 202(3Ni, 18Cr) 202(5Ni, Cr19~) 410(S) 430 430J1L 445(443CT) 304(L) 316 & Others	2B, BA, No.3, No.4, Scotch Brite, Duplo, Horizontal No.4, Horizontal HL, Vibration, Marble	0.3~2.0	860~1560	The width range for Horizontal No.4 & HL : 600~1300mm

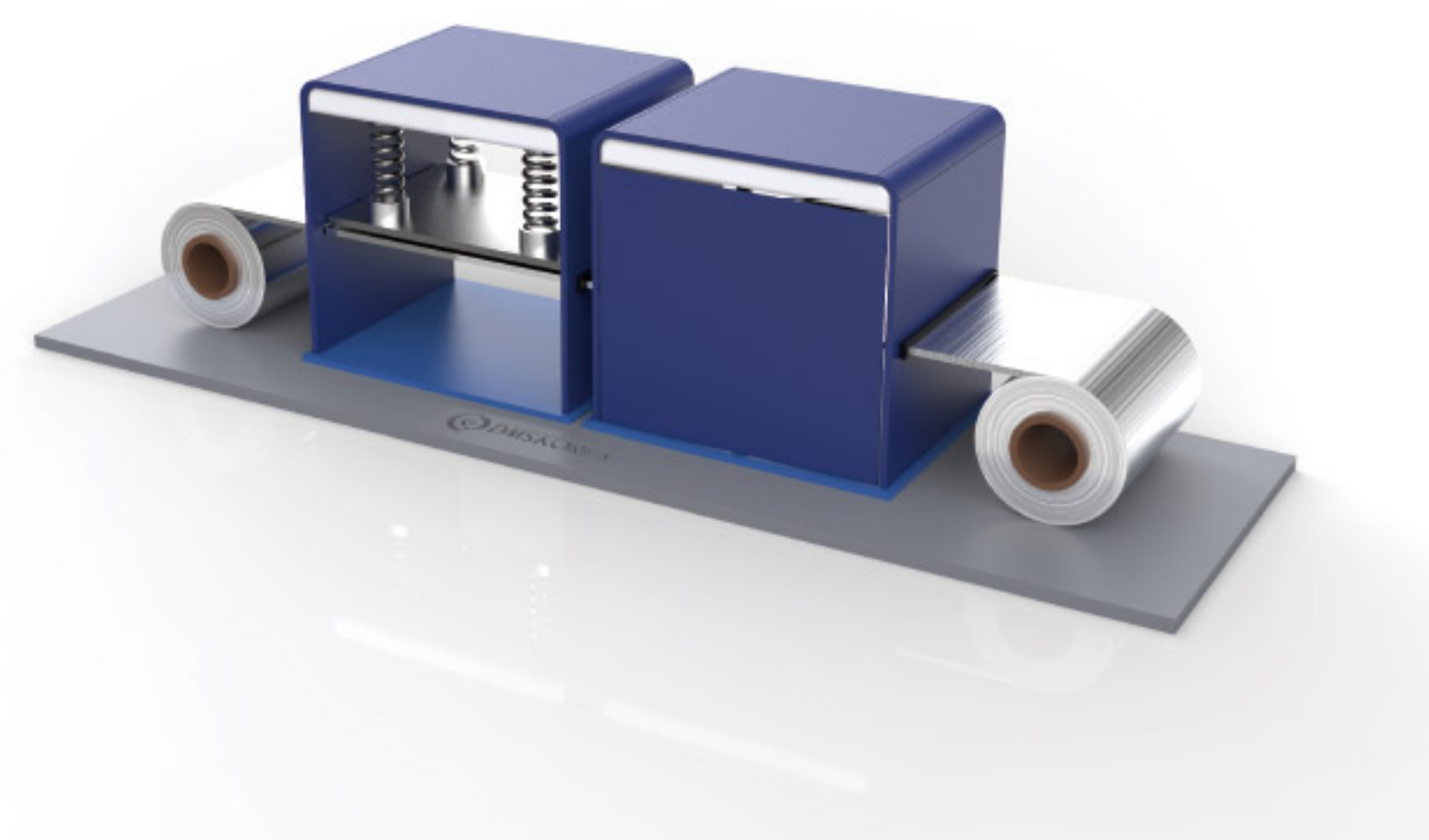




## B. Multi Polishing Line – Wet Type

It is complex facility that specializes in coil polishing, which involves polishing the surface of a coil in a widthwise direction. This process results in the production of a continuous coil with no defined maximum length.

Horizontal No.3 Finish / Horizontal No.4 Finish / Horizontal Hair Line Finish / Vibration Finish / Marble Finish



## A. Coil Polishing Line – Wet Type

No.3 Finish / No.4 Finish / Hair Line Finish / Scotch Brite Finish / Duplo Finish







## PRODUCT CATEGORY

### Home & Kitchen Appliances

These products are specifically designed for kitchen appliances that require both internal and external materials to maintain their hygiene, and it is highly valued for its outstanding resistance to corrosion and abrasion. It is usually used for refrigerator doors, washing machine inside, oven, etc.

Grade I 304, 430, 430J1L, 204CU



Refrigerator



Dish Washer



Oven Range

### Architecture

These products are used for both interior and exterior applications in building construction. It boasts a surface that is not only aesthetically pleasing but also highly resistant to corrosion and abrasion.

In addition, it can be processed in various shapes to meet different design needs, including surface treatments like painting on stainless steel plates to achieve desired colors and textures.

Grade I 200S / 300S / 400S / GI / EGI



Application